

Z-DIRECTIONAL TENSILE TESTER

Thwing-Albert's ZDT Tester is a compact, precision PC-controlled instrument that measures the internal fiber bond strength of paper, paperboard, liner board and coated fine papers.

Z-directional force provides an indication of expected material performance relating to glue-bonding of carton corners and seams, delamination and the use of high tack coatings.

Integrated control

Utilising cutting-edge technology, all electronics and controls are fully integrated into the test frame. No external control boxes or additional PC interface cards are required enabling the connection to a standard PC with a serial port.

A magnetic testcontrol keypad is easily moved to provide the most ergonomic positioning for the operator. Other benefits include one-touch auto zero and a software-based automatic calibration system.

Powerful software

ZDT software enables the user to quickly set-up test parameters including compression force, speed, dwell time and length of test. It also provides advanced capabilities for database management and reporting. Test comment fields allow the operator to enter information after the completion of the test indicating test failure or other pertinent details. ZDT software will automatically write result data to other software packages incl. Access™ and Excel™.



Model 1750-2003

Features

- Fully automated instrument, including ZDT test software (utilises MAP™ software package)
- Operating system 98/2000/NT/XP
- One serial interface to a PC
- No PC interface cards
- Serial load cell interface
- Self-adjusting test platen
- Automatic electronic calibration
- Movable test control panel
- Side electronics panel for easy serviceability
- Push-button auto zero
- Self-adjusting test platen ensures uniform tension is applied to pull the sample apart.

Physical specifications

Dimensions - excl. PC

25.5 x 42 x 80 cm (WxDxH)

Net weight

51 kg

Crosshead travel

58.4 cm

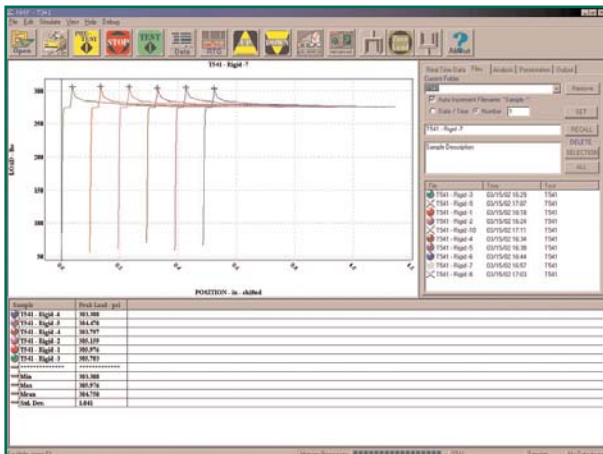
Test platens

Upper (self-adjusting) : 6.45 cm²

Lower : 63 x 63 mm

Standards

TAPPI T-541



Overlay test curves for a quick comparison

Performance data

Crosshead guidance

Precision ball screw

Crosshead speed

1 to 1000 mm/min

Horizontal clearance

Unlimited

Depth clearance

89 mm

Force compression

1 kN

Speed accuracy

± 0.1 %

Force measurement

High precision 2 kN load cell

Force accuracy

- 10 to 100 % load capacity : ± 0.25 % measuring value
- less then 10 % load capacity : ± 0.025 % of load cell capacity

Force resolution

16 bit A/D to 0.1 N

Position resolution

0.6 µm (0.00002 inch)

System control

PC-based with serial interface (no PC slave cards)

Safety features

Emergency stop button, upper & lower limit switches with over-travel and load cell overload protection.

Power requirements

220/230 V, 50 Hz - 240 V, 50 Hz

Operating/storage environment

Air temperature : operating 10° to 50° C, storage -25° to 70° C

Relative humidity : operating 10 to 85 % (non-condensing), storage 5 to 90 % (non-condensing)

*Your professional supplier
of testing equipment*



Firma Klimatest
ul. Pilczycka 198F
54-144 Wrocław
tel/faks 71 354 06 80 / 71 354 06 92
klimatest@klimatest.com
www.klimatest.com

Firma Klimatest
ul. Wolczyńska 133
01-919 Warszawa
tel/faks (22) 864 04 35
stan@medianet.pl

THWING-ALBERT EUROPE

Nijverheidslaan 47 B-8540 Deerlijk

Tel.: +32(0)56.78.21.70 Fax: +32(0)56.77.30.40 Email: taeurope@rycobel.be Website: www.taeurope.com